



STAR Group

Case Study BMW Motorrad

Case Study BMW Motorrad

BMW is by far the largest producer of motorcycles in Europe. The huge range of new models, with lots of extra equipment, puts a heavy load on the information process. New markets also increase the need for translation and adaptation of existing documentation. After a few false starts with traditional document management systems and DTP programs, the task of creating a new system for BMW Motorrad's information went to the STAR Group.

BMW's top objectives

- ▲ Increased data quality
- ▲ Accommodate increasing vehicle complexity
- ▲ Manage a constantly growing document volume, with over 150 variants of motorcycles
- ▲ Increase the document life cycle
- ▲ Manage new languages

Solution

The new solution uses four STAR technologies: the GRIPS information management system; the Transit translation memory (TM) system; the TermStar terminology management system; and the WebTerm web-based terminology management system. STAR GRIPS is at the core of this new solution.

It is a semantic system for the structured entry, management and publication of multilingual information that is rigorously based on XML technology. The system also produces a truly automatic layout of the output, regardless of media. This concept enables the automatic production of derivative information, on demand.

About STAR

Over a period of 30 years, working side-by-side with many of the world's major brands, we have pioneered innovative services and award-winning technologies to unify product information across channels in order to drive exceptional customer experiences in any language.

With our headquarters in Switzerland, STAR operates more than 50 offices in over 30 countries worldwide.

For example, a Quick Start Guide may be a derivative of an Owner's Manual, which again is a derivative of the Maintenance and Repair Manual, which is derived from the original engineering documentation. It also enables fast and consistent translation with the aid of the translation memory and terminology management systems.

The use of STAR technology has made the BMW solution much more than just an information management system – the end result is a knowledge database from which various types of information can be published.



Fig. 1: BMW Rider's Manual automatically published in GRIPS

What we do

The GRIPS installation at BMW supports:

- ▲ Media-neutral data management based on XML technology
- ▲ Flexible re-use of information units
- ▲ Collaboration between geographically distributed teams
- ▲ Integrated language and translation management
- ▲ XML-enabled translation memory system
- ▲ Role-based permission access rights in order to optimize the editorial workflow
- ▲ Version management
- ▲ Management of non-XML resources in any data format
- ▲ Integrated workflow and reporting management
- ▲ Publication of service information that is specific to the configuration (VIN)

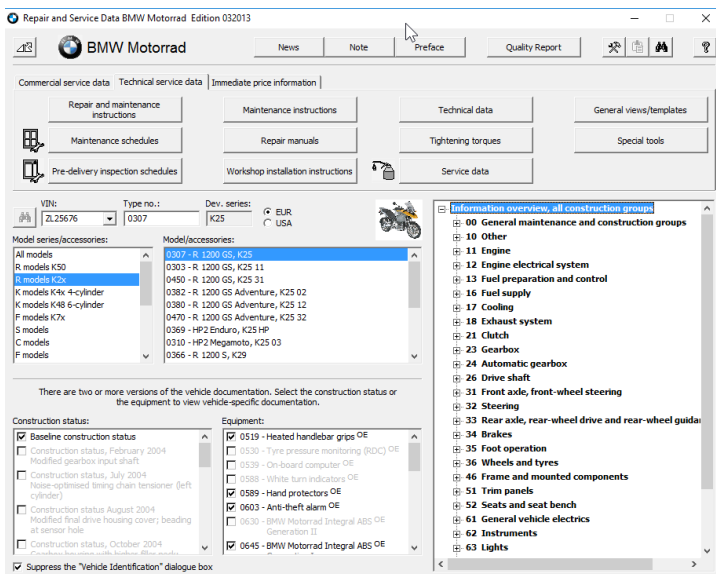


Fig. 2: Provision of electronic repair and service information for BMW Motorrad that is specific to the VIN (configuration)

Outcome

Operation

- Press and hold down button 4 until the reading in display area 2 has reset.
- Press button 1.
 - » The current level of dimming appears in display field 2.
 - Repeatedly press button 1 until the desired dimming level appears on the display.
 - » The brightness of the display increases one level each time you press the button. Each time you press the button after maximum brightness is reached, brightness is reduced by one level.

Multifunction display
Adjust the dimmer

⚠ Attempting to adjust the dimmer while riding the motorcycle can lead to accidents. Do not attempt to adjust the dimmer unless the motorcycle is at a standstill.◀

- Switch on the ignition.

Lights
Side light

The side lights switch on automatically when the ignition is switched on.

⚠ The side lights place a strain on the battery. Do not switch the ignition on for longer than absolutely necessary.◀

Low-beam headlight

The low-beam headlight switches on automatically when you start the engine.

⚠ When the engine is not running you can switch on the lights by switching on the ignition and either switching on the high-beam headlight or operating the headlight flasher.◀

Fig. 3: A page from the BMW Rider's manual that has been laid out automatically

Cost savings

The integration of language and translation management along with the use of Transit and the terminology tools reduced BMW Motorrad's overall translation costs by approximately 20%. In addition, the flexible re-use of information reduced the costs of the original writing and information management by 40%.

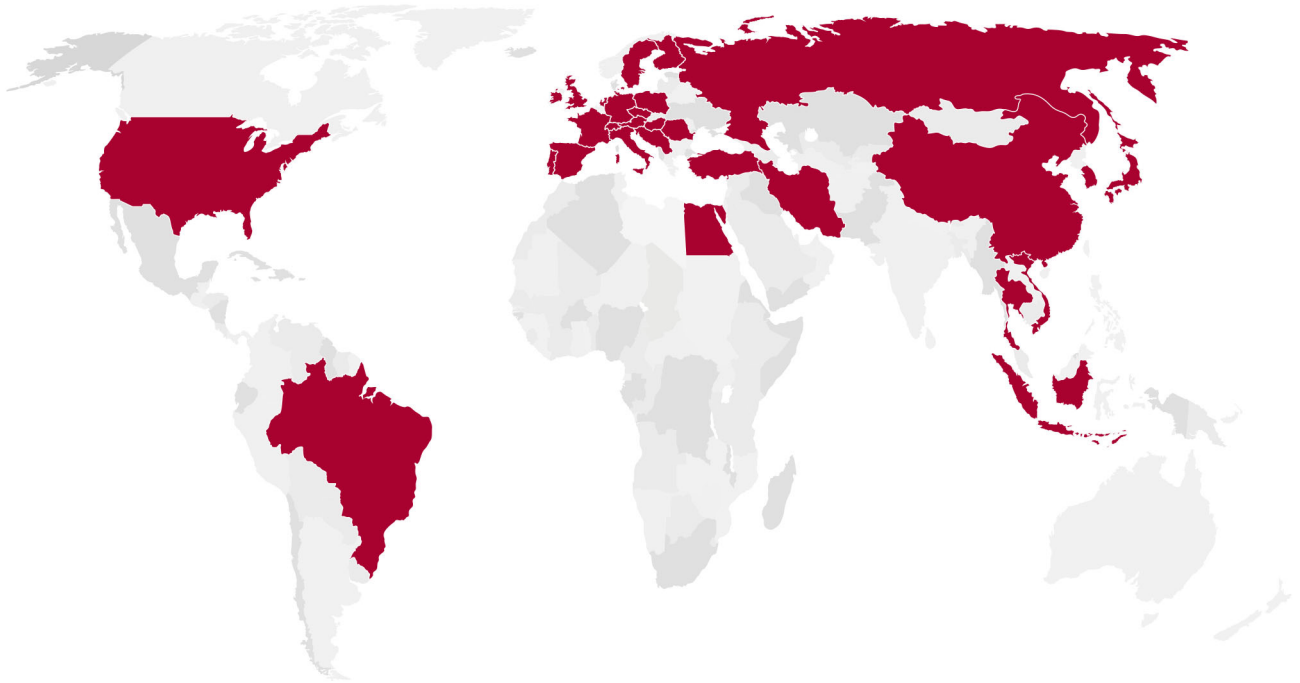
The centralized product-centric information management solution produces more information, faster. It also offers the re-use of proven structures and information from current systems.

Flexibility

BMW can produce product- and user-specific product information in all languages, including any Asian language, on all current and future media. The information can be used in, for example, interactive documentation and diagnostics systems, and can be retrieved on any mobile device.

Flexible maintenance

A maintenance calculator allows for vehicle-specific calculation of maintenance schedules and tasks.



STAR Group America, LLC
US Headquarters

5001 Mayfield Road | Suite 220
Cleveland, Ohio 44124

Tel: +1 (216) 691-7827
www.stargroupamerica.net